

BARNSTAPLE AND BIDEFORD PORT HEALTH AUTHORITY.

REPORT OF PORT MEDICAL OFFICER OF HEALTH for 1939.



Gentlemen,

I have the honour to report:

I. Amount of Shipping entering the Port during the Year 1939.

Table A.

Number Inspected by Medical Officer of Health	Number Inspected by Sanitary Inspector	Number Reported to be defective	Number of Vessels on which defects were remedied.
—	123	2	2

Number of Vessels reported as having, or having had, during the voyage infectious disease on board.....)..... None

Table C.

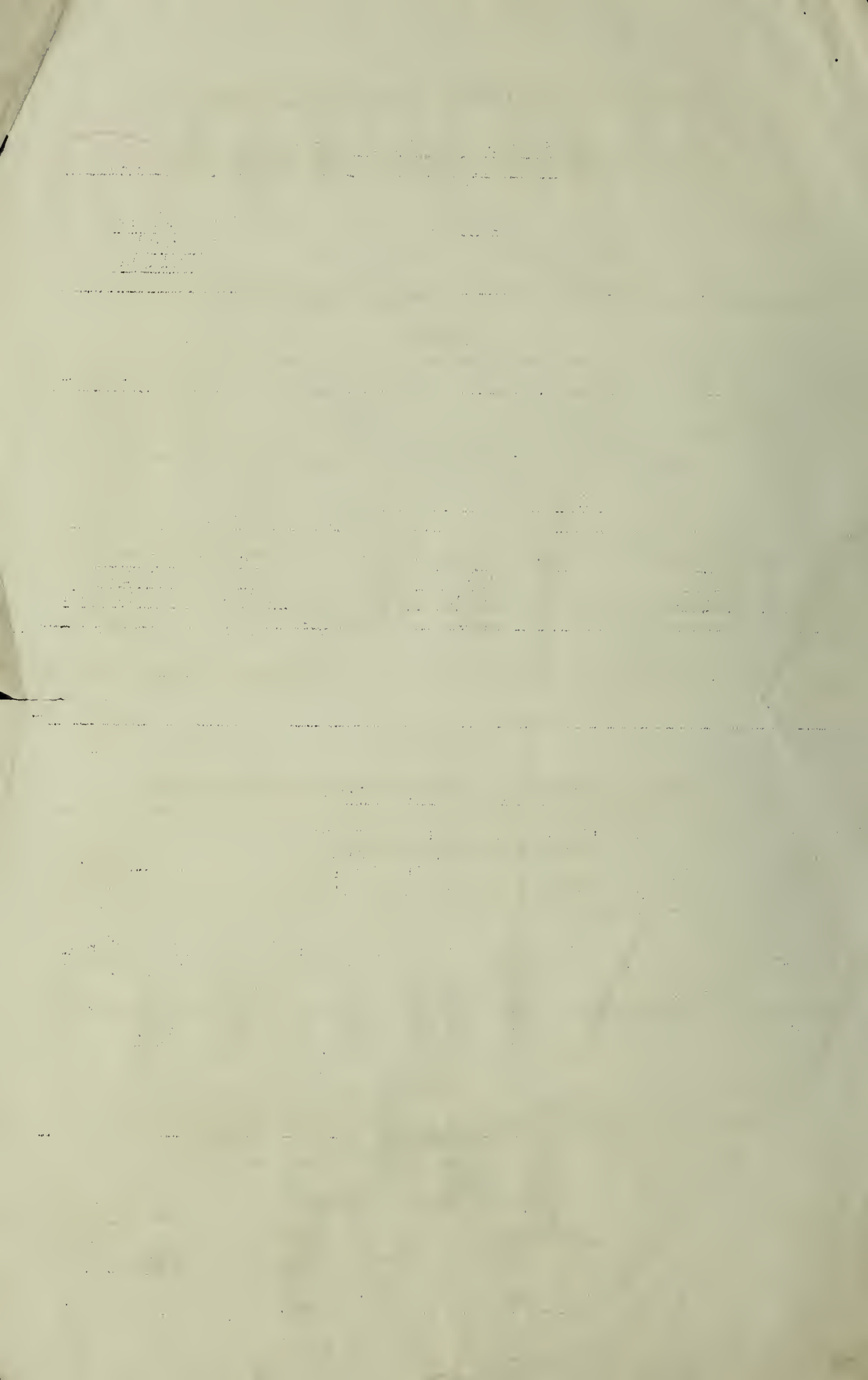
Cases of Infectious Sickness landed from Vessels.

<u>Disease</u>	<u>Number of Cases during 1939</u>		<u>No. of Vessels Concerned</u>
	<u>Passengers</u>	<u>Crew</u>	
None	None	None	None

Table D.

Cases of Infectious Sickness occurring on Vessels during the voyage but disposed of prior to arrival.

<u>Disease</u>	<u>Number of Cases during 1939</u>		<u>No. of Vessels Concerned</u>
	<u>Passengers</u>	<u>Crew</u>	
—	—	—	—



V. Measures against Rodents.

<u>Destroyed</u>	<u>Examined</u>	<u>Found to be Infected with plague</u>
—	—	—

VI. Hygiene of Crews' Spaces.

Classification of Nuisances.

<u>Defects of Original Construction</u>	<u>Structural defects through wear and tear</u>	<u>Dirt, Vermin and other conditions prejudicial to health.</u>
—	—	—

VII. Food Inspection.

- (1) Action taken under the Public Health (Imported Food) Regulations, 1925; The Public Health (Imported Milk) Regulations 1926; The Public Health (Preservatives, &c., in Food) Regulations, 1925 to 1927. —
- (2) Shell-fish. Information respecting any shell-fish beds or laying within the jurisdiction of the P.H.A., stating whether they are, in the opinion of the Medical Officer, liable to pollution. Report of any action taken under the Public Health (Shell-fish) Regulations, 1915, or the Public Health (Cleansing of Shell-fish) Act 1932. Shell-fish beds at junction of Taw and Torridge. Not liable to pollution.

(Signed) T. G. YOUNGMAN,

T. G. Youngman
Deputy Medical Officer,

Port of Barnstaple & Bideford Health Authority.

